

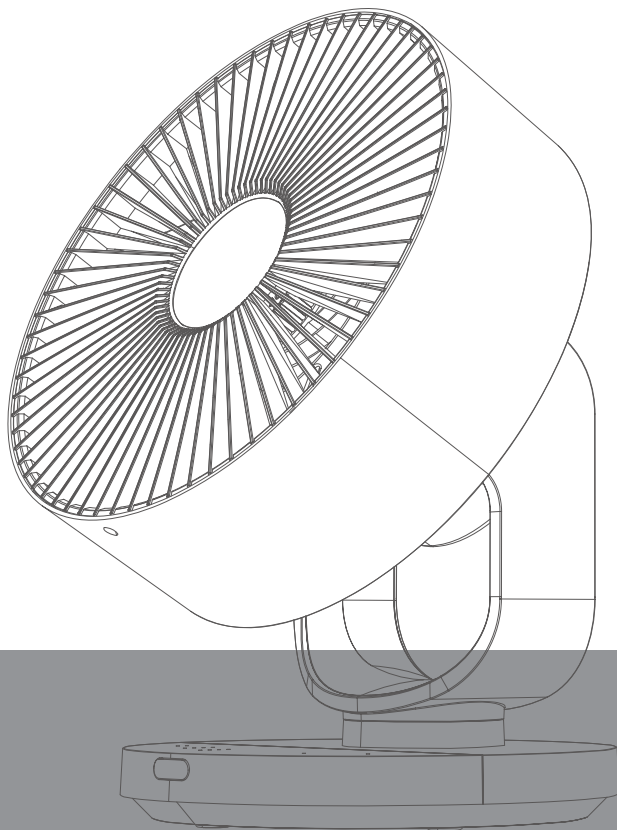
acerpure

acerpure COZY Series

Air Circulator

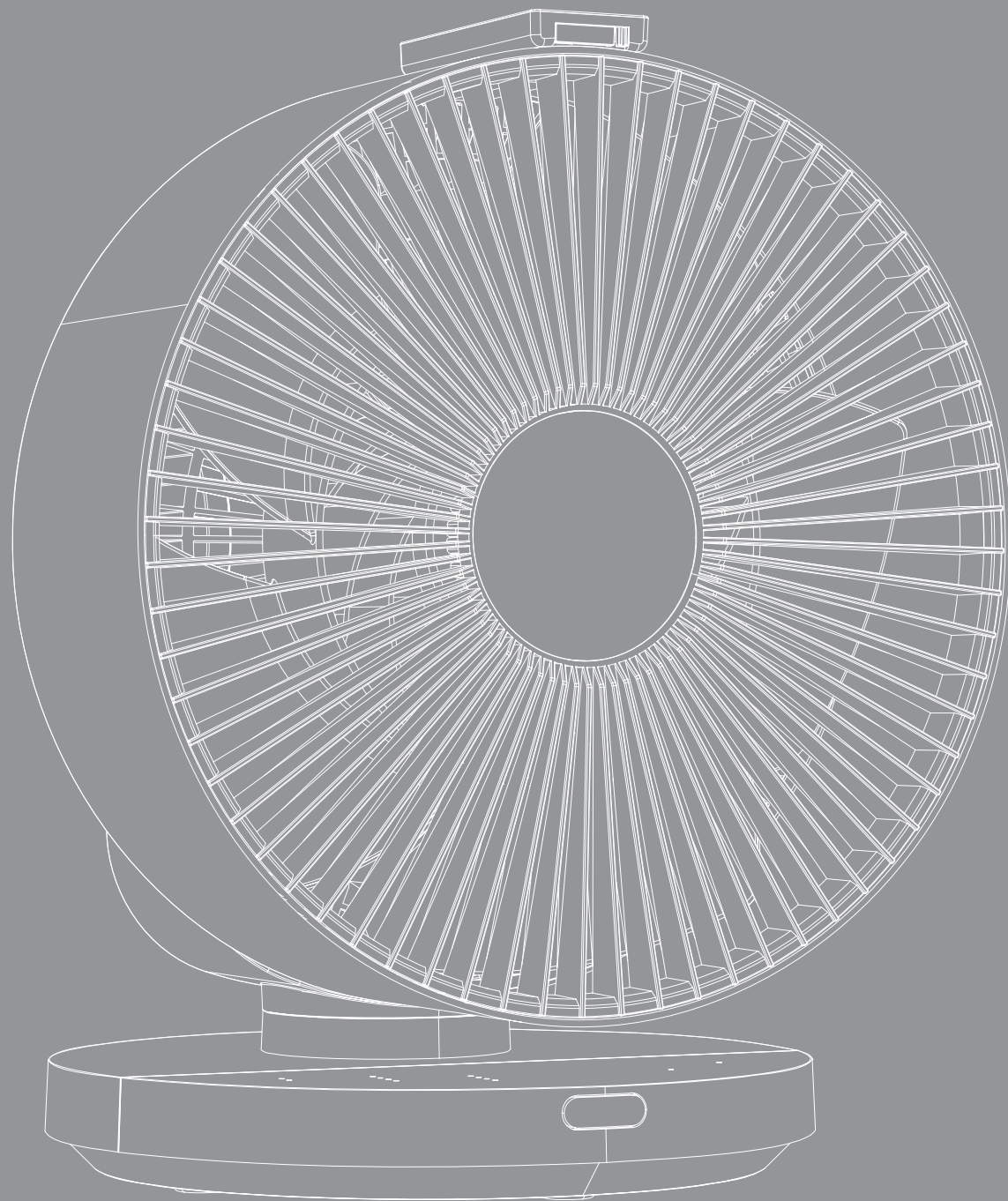
User Manual

Model: AF533-20W



www.acerpure.com

Copyright© 2023 AcerPure Inc. All Rights Reserved.



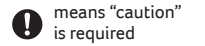
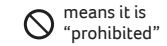
User Manual

Thank you very much for purchasing this product.
Please make sure to read this manual carefully, use
this product correctly, and store it properly.

Table of Contents

Safety Instructions	05
Product Configuration and Structure	06
Remote Control Instructions & installations	07
Introduction to Control Panel	08
Maintenance and Disassembly	09
Before Seeking After-sales Service	10
Product Specifications and Company Information	11

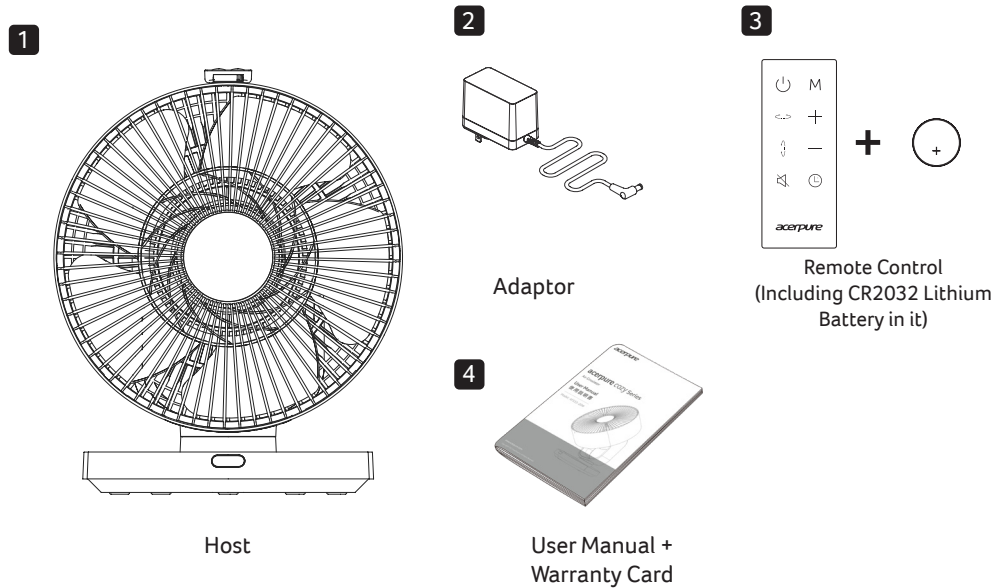
Safety Instructions



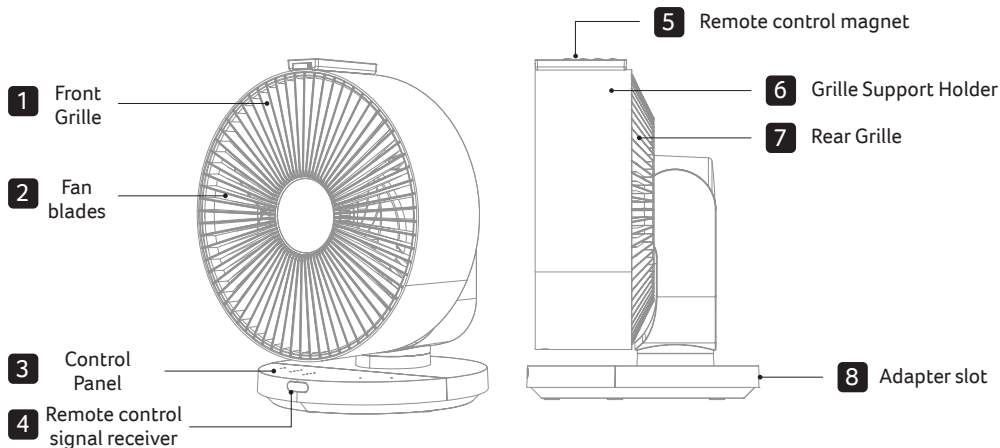
<p> This product is for home use only; do not use for other purposes.</p>	<p> Check whether the plug is ruptured or damaged before use, and do not bend, process, pull or twist the cable in order to prevent poor contact.</p>
<p> Before using the product, please check whether the voltage is consistent with the indicated voltage on the label of this product.</p>	<p> Switch off the power before unplugging the power plug. Do not touch the plug with wet hands in order to prevent danger of electric shock.</p>
<p> Do not insert the plug or use the machine before the product is fully assembled; make sure to switch off the power and unplug the machine.</p>	<p> Children should be supervised to ensure they do not play with this product.</p>
<p> Make sure that the power is disconnected and the plug is unplugged should there be the need to disassemble this product.</p>	<p> Keep the button battery of the remote control out of infant's reach in order to prevent swallowing by accident. Seek medical attention immediately if the battery is swallowed by accident.</p>
<p> Do not use this product where foreign objects, such as curtains, may be sucked into the air circulator in order to prevent product damages.</p>	<p> Use of this product without proper assembly is strictly prohibited; it is also prohibited to insert your hand or sharp objects into the guard of the air circulator in order to prevent accidents from occurring.</p>
<p> Do not hang clothes on the guard of the air circulator, and do not use the product in places with barriers or uneven surfaces. When using the product on places such as shelves, make sure to fix the product in place properly so that it will not fall due to reasons such as earthquakes.</p>	<p> This product is not intended for use by users (including children) with physiological, perceptual, mental ability, experience or knowledge deficiencies unless used safely under the supervision or guidance of the person responsible for their safeties.</p>
<p> Do not spray volatile agents, insecticides and other liquids on this product.</p>	<p> Do not use this product at places with high temperature (over 40°C), high humidity (such as bathrooms), dusty or where acid-base oils can easily spill.</p>
<p> Make sure to switch off the power and unplug the power plug if this product is not used for an extended period of time. Especially when there are emergencies such as thunder and lightning, earthquakes or fires, please switch off the power and unplug the machine immediately.</p>	<p> This product only requires external cleaning and maintenance; do not clean the surface with rough cleaning tools, and do not rinse it with water directly.</p>
<p> If the product was accidentally immersed in water, please stop using it immediately and contact customer service personnel.</p>	<p> If you discovered any abnormalities such as noises, smoke or strange odors, please switch off the power immediately, unplug the power plug and contact customer service personnel.</p>
<p> This product may not be repaired or modified by repairers who are not authorized by our company. If the power supply is damaged, it must also be replaced by authorized repair personnel in order to avoid danger.</p>	<p> Please refer to the company information at the end of this manual on how to contact customer service.</p>

Product Configuration and Structure

Product accessories

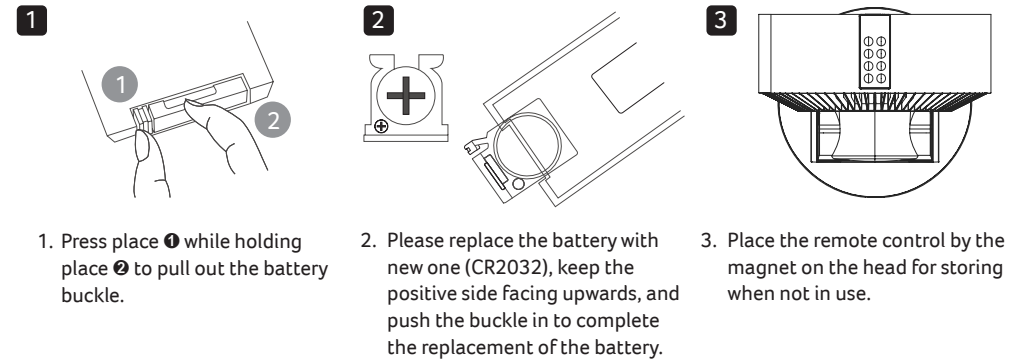


Product Structure



Remote Control Instructions & installations

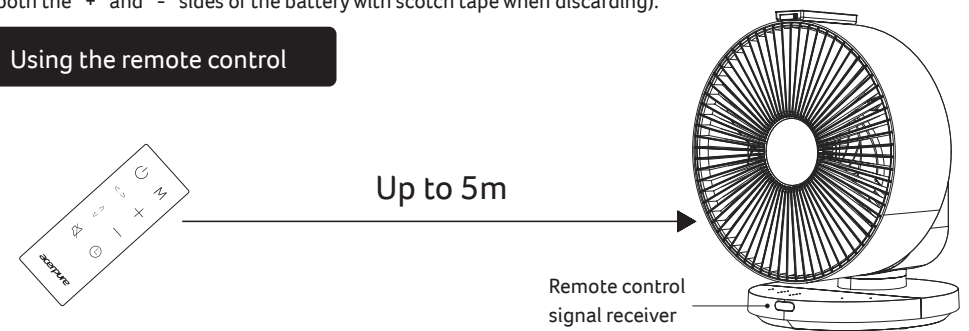
Replacement Of Remote Control Battery



Precautions for battery usage

1. When pulling out the battery shackle, please pull it out slowly and do not tug on it forcefully to prevent the battery from falling out of the shackle.
2. Keep batteries out of an infant's reach. Seek medical attention immediately if the battery is swallowed by accident.
3. If fluids leaked from the battery accidentally splashed into the eyes, do not rub the eyes; rinse the eyes thoroughly with clean water, such as tap water, then seek medical attention immediately. Please note that this may cause blindness.
4. If fluids leaked from the battery accidentally got on the skin and clothes, please wash it off immediately with clean water, such as tap water. Please note that this may also cause dyeing.
5. To discard batteries, please dispose of them according to the recycling methods of your living area (cover both the "+" and "-" sides of the battery with scotch tape when discarding).

Using the remote control



Remote control precautions

1. The remote control must point directly to the signal receiver.
2. The usage range of the remote control is approximately within 5M to the front of the receiver; if the remote control is not faced towards the receiver, its usage range will be reduced.
3. Do not place any obstacles between the receiver and the remote control.
4. Please keep the remote control properly; avoid impacts and dropping. Please remove the battery when not using the remote control, and keep it in a safe place.

Introduction to Control Panel



Power ON/OFF
Press to start or stop using this product.

Wind speed adjustment Button
1. Use this button to adjust the wind speed; One press for one level speed up (the adjustment range is from level 1-12.)
2. There are 4 speed lights on the panel; each light has 3 different brightness to present speed levels.

* Please use the + and - to adjust the speeds on the remote control.

Timer
Use this button to preset automatic power on/off.

Scheduled Power On:

1. Please make sure the plug is well connected
2. Remember do not press power button.
3. Press timer button to preset the power-on time. The hour setting order is: 1>2>4>8> timer off

Scheduled power off:

1. Make sure the power is on.
2. Press timer for setting the power off time. The hour setting order is: 1>2>4>8> timer off

* There are 2 timer lights on the panel; each light has 2 different brightness to present Timer setting status.

Silent mode
Use this button to turn on/ off the button sounds; pressing this button under silent mode will turn on the sound.

Left and right swing Button
You can use this button to turn left and right swing on or off.

Up and down swing Button
You can use this button to turn up and down swing on or off.

! The head swings of this model are set as adjusted on the panel or remote control; do not adjust it manually to avoid damaging the motor.

! First time turning on the swing mode, it might take 30-60 seconds for machine to stay at same angle to finish motor calibration. Please wait until the process finish to ensure the stability of the fan swing.

Mode Switch Button
You can use this button to adjust the mode; to cancel mode status, press the wind speed adjustment button directly to adjust the wind speed.

Nature Mode
One press for Nature mode:
The machine will simulate the natural wind automatically.

Sleep mode
Twice press for Sleep Mode: the machine will enter sleep scenario. Default speed for sleep mode is speed 1 with no button sounds & less brightness, but users still could adjust the speeds as needed.

Turbo Mode
Three times press for Turbo Mode: the machine will enter Turbo mode, adjusting the wind speed to the maximum level with one press.
* To dismiss from 3 modes above, please press Wind Speed Adjustment button or one more press after Turbo mode can do.

Child safety lock mode

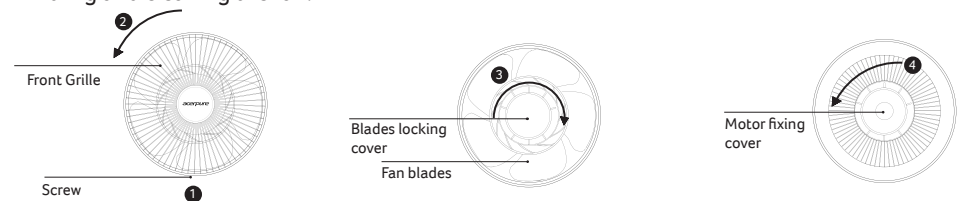
1. Press mode switch button for 3 seconds, the machine will activate the child lock.
2. Once users touch the control panel & remote control, the child lock light will flash to show the lock status.
3. To unlock the mode, please press Mode Switch Button for 3 secs again.

* Child Lock mode could only be adjusted on the panel, not on the remote control.

Maintenance and Disassembly

Disassembling the fan blades & grille

Please make sure that the power of this product is disconnected properly before disassembling and cleaning the fan.



1. Please unscrew the front grille.
2. Remove the front grille from the fan.

3. After removing the front grille, please rotate the Blades locking cover clockwise to remove it, and the fan blade can be disassembled successfully.

4. After disassembling the fan blades, remove the motor fixing cover in a counter-clockwise direction as shown in the figure above; the rear grille can be disassembled after removing the motor fixing cover.

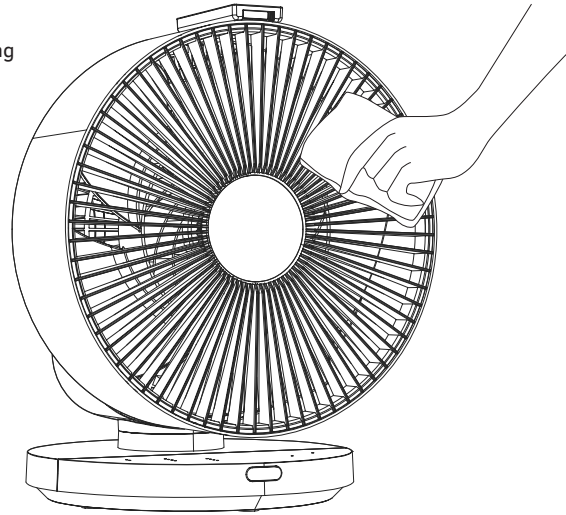
Maintenance

This product only requires general external cleaning and maintenance (as shown in the figure).

- Do not wipe with thinner, toluene, acidic cleansers, lamp oil, alcohol, or chemical cloth in order to avoid discoloration or deterioration.
Wipe with a neutral kitchen detergent first, and the wipe with a clean and soft cloth.

- Please note: After maintenance and cleaning, wait for the product to fully dry before connecting power to use again or storing. If the product needs to be stored, please place the product back into the packaging box in the original packaging order, and place it at a dry location for safekeeping.

- Please note: Please keep the connecting parts of the machine and the motor by the head dry and dustless to prevent the machine from being damaged from moisture or water.



Wipe with a neutral kitchen detergent first, and the wipe with a clean and soft cloth.

Before Seeking After-sales Service

If you discovered that the product malfunctioned, please check the following items before contacting customer service.

Please contact customer service if the abnormal problems still could not be solved with the methods above.

Problem	Possible cause	Solution
Product does not turn on	Is the correct voltage used? Is power connected to the product properly?	Please insert the power plug into the outlet properly, and use the correct voltage
Fan blades did not rotate after the product was turned on	Are there foreign objects stuck in the air circulator?	Please clean the foreign object from the front guard of the air circulator.
When the noise is too loud	Is there excessive dust accumulated in the air circulator?	Please clean the front guard of the air circulator properly.
	Are there foreign objects stuck in the air circulator?	Please clean the foreign object from the front guard of the air circulator.
	Is the product placed on an uneven floor or table top?	Please move the product to a flat floor or table top.
	Is the motor shaft of the air circulator fan blades installed properly?	Please install the motor shaft of the air circulator fan blades properly.

Problem	Possible cause	Solution
When the remote control cannot be operated	Is the battery dead?	Please replace the battery (Applicable model for the remote control: CR2032).
	Was the remote control pointed towards the front of the product when used?	Please change the usage angle and point the signal receiver of the remote control to the product when in use.

Product specifications

Air circulator fan specifications	
Product name	Air circulator fan
Product model	AF533-20W
Rated voltage	DC24V ⁼⁼
Rated power	27W
Net weight	2.2 kg
Product dimensions	260X215X300 mm
Place of origin	China

AC Adapter Specifications	
Rated voltage/rated frequency	100-240V-50/60Hz
Output voltage	DC24V ⁼⁼

- The appliance is only to be used with the power supply unit provided with the appliance.

- The appliance must only be supplied at safety extra low voltage.

Company information

acerpure

www.acerpure.com

acerpure