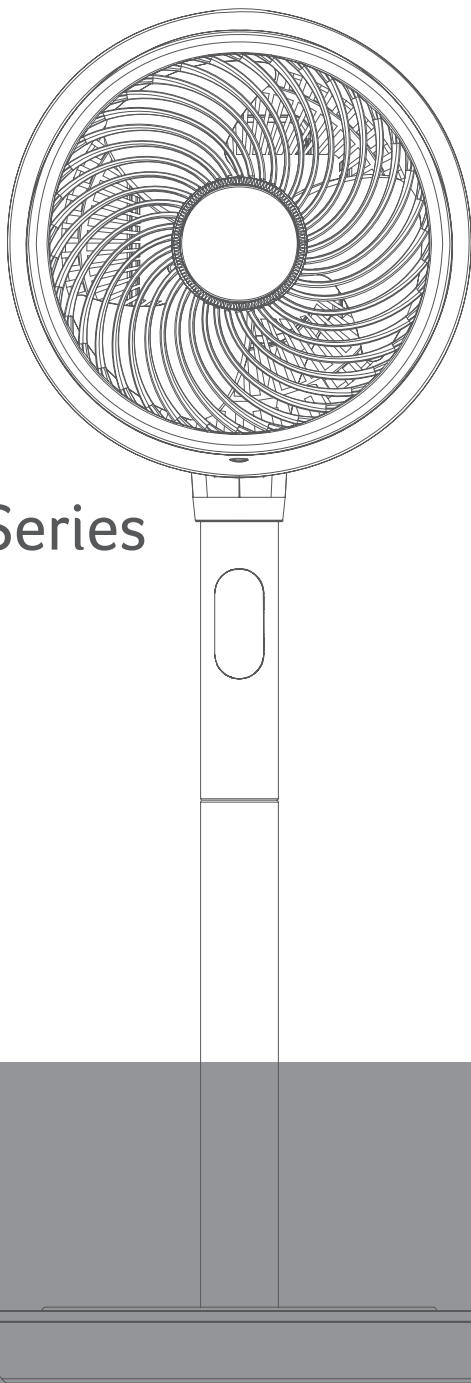


*acerpure*



# acerpure COZY Series

Air Circulator Fan

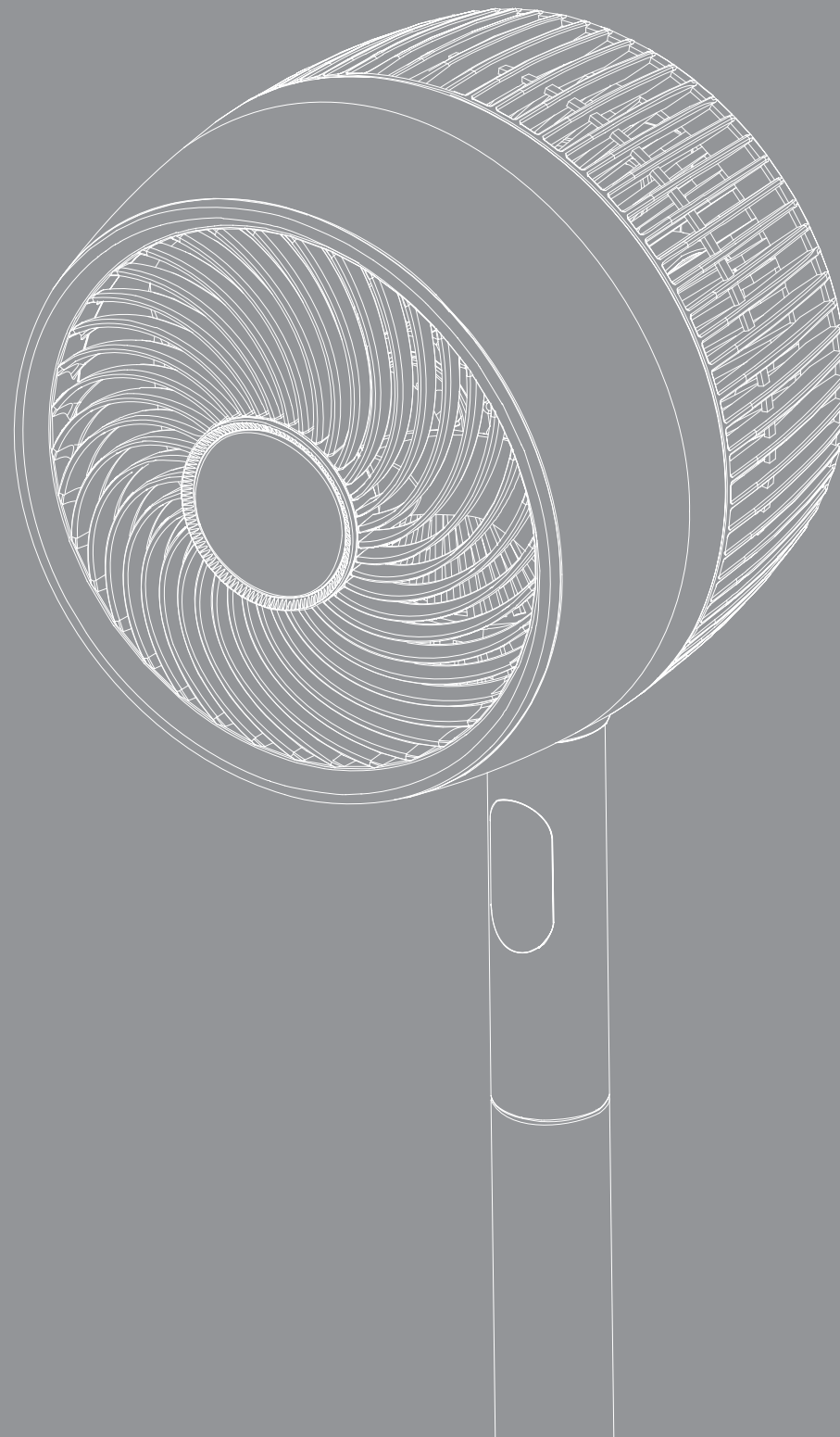
## User Manual

---

Model: AF773-20W  
AF773-20P  
AF773-20Y

[www.acerpure.com](http://www.acerpure.com)

Copyright© 2023 AcerPure Inc. All Rights Reserved.




## User Manual


Thank you very much for purchasing this product.  
Please make sure to read this manual carefully, use  
this product correctly, and store it properly.

# Table of Contents

Safety Instructions	05
Product Configuration and Structure	06
Product Assembly and Disassembly	07
Remote Control Instructions & installations	08
Introduction to Panels and Display Screens	09
Maintenance and Disassembly	11
Before Seeking After-sales Service	12
Product Specifications and Company Information	13

## Safety Instructions

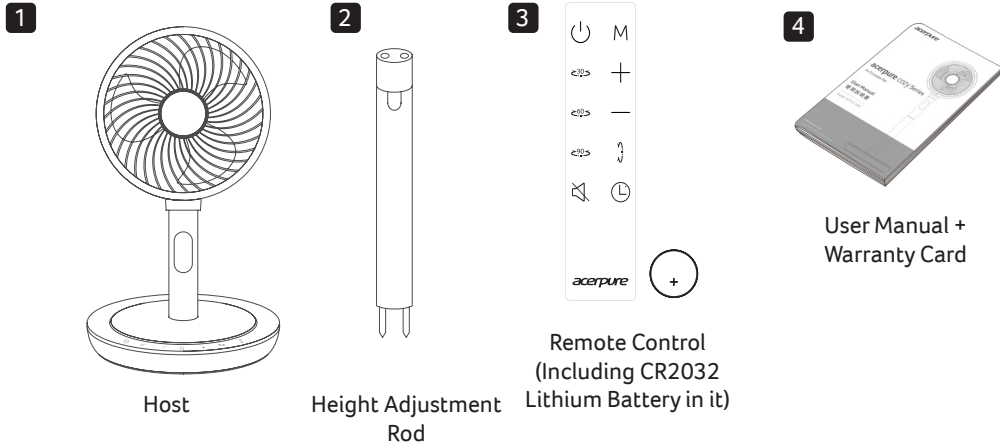
 means it is "prohibited"

 means "caution" is required

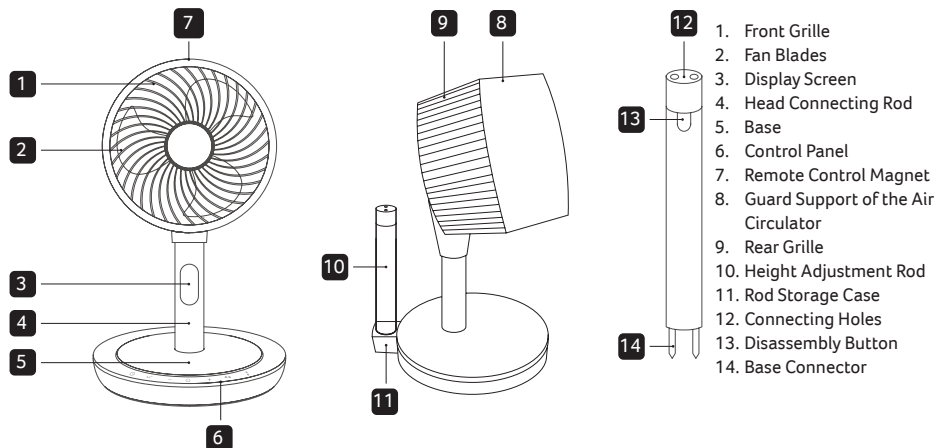
 This product is for home use only; do not use for other purposes.	 Check whether the plug is ruptured or damaged before use, and do not bend, process, pull or twist the cable in order to prevent poor contact.
 Check whether the voltage is consistent when the indication on the voltage label of this product before use.	 Switch off the power before unplugging the power plug. Do not touch the plug with wet hands in order to prevent danger of electric shock.
 Do not insert the plug or use the machine before the product is fully assembled; make sure to switch off the power and unplug the power plug before assembling / disassembling the machine (including adjusting the height & removing the grille & blades)	 Children should be supervised to ensure they do not play with this product.
 Make sure that the power is disconnected and the plug is unplugged should there be the need to disassemble this product.	  Keep the battery of the remote control away from children. If the battery is swallowed or placed in the body by accident, it might cause severe or fatal injuries in 2 hours. Please seek medical attention immediately if accidents happen.
 Do not use this product where foreign objects, such as curtains, may be sucked into the air circulator in order to prevent product damages.	 Use of this product without proper assembly is strictly prohibited; it is also prohibited to insert your hand or sharp objects into the guard of the air circulator in order to prevent accidents from occurring.
 Do not hang clothes on the guard of the air circulator, and do not use the product in places with barriers or uneven surfaces. When using the product on places such as shelves, make sure to fix the product in place properly so that it will not fall due to reasons such as earthquakes.	 This appliance can be used by children aged from 8 years and above and persons with reduced physical, sensory or mental capabilities or lack of experience and knowledge if they have been given supervision or instruction concerning use of the appliance in a safe way and understand the hazards involved. Children shall not play with the appliance. Cleaning and user maintenance shall not be made by children without supervision
 Do not spray liquids such as volatile agents or insecticides on this product.	 Do not use this product at places with high temperature (over 40°C), high humidity (such as bathrooms), dusty or where acid-base oils can easily spill.
 Make sure to switch off the power and unplug the power plug if this product is not used for an extended period of time. Especially when there are emergencies such as thunder and lightning, earthquakes or fires; please switch off the power and unplug the power supply immediately.	 This product only requires external cleaning and maintenance; do not clean the surface with rough cleaning tools, and do not rinse it with water directly.
 If the product was accidentally immersed in water, please stop using it immediately and contact customer service personnel.	 If you discovered any abnormalities such as noises, smoke or strange odors, please switch off the power immediately, unplug the power plug and contact customer service personnel.
 This product may not be repaired or modified by repairers who are not authorized by our company. If the supply cord is damaged, it must be replaced by the manufacturer, its service agent or similarly qualified persons in order to avoid a hazard.	 Please refer to the company information at the end of this manual on how to contact customer service.

# Product Configuration and Structure

## Product accessories



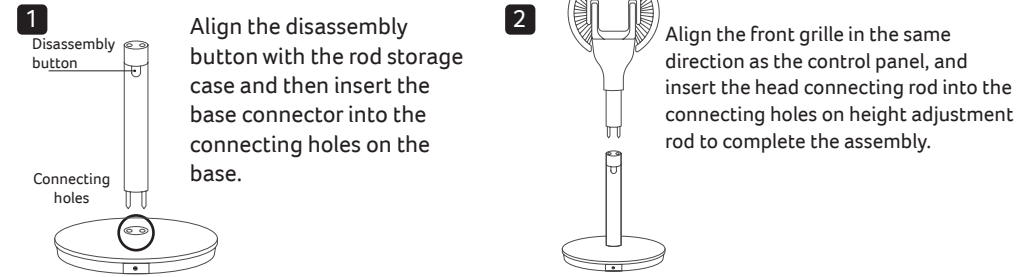
## Product Structure



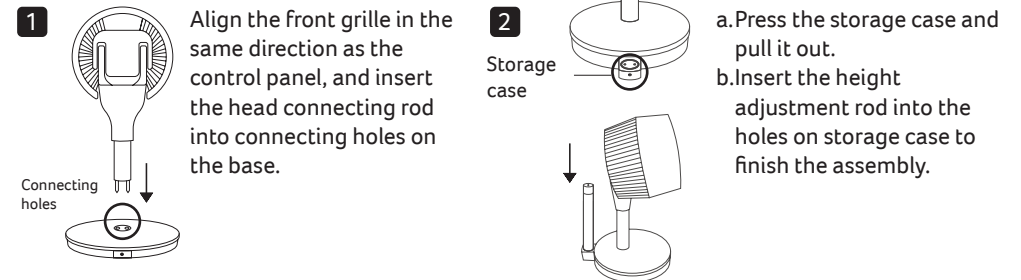
# Product Assembly and Disassembly

! Please unplug the product before installation, follow the instructions to assemble & disassemble it, and keep the packages properly for the storage.

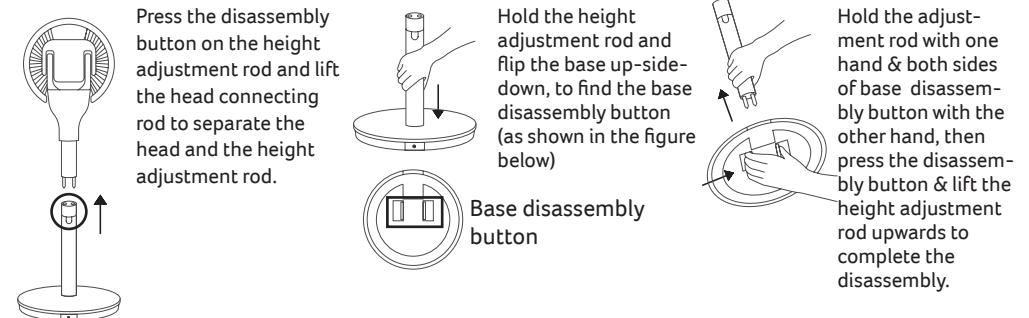
## Product assembly - Stand fan



## Product assembly - Table fan

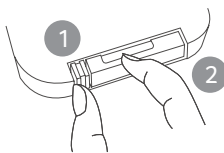
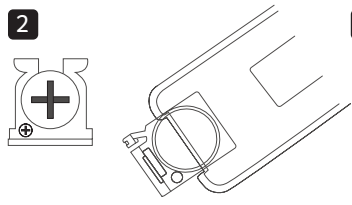
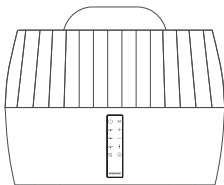


## Product disassembly (height adjustment)



# Remote Control Instructions & Installation

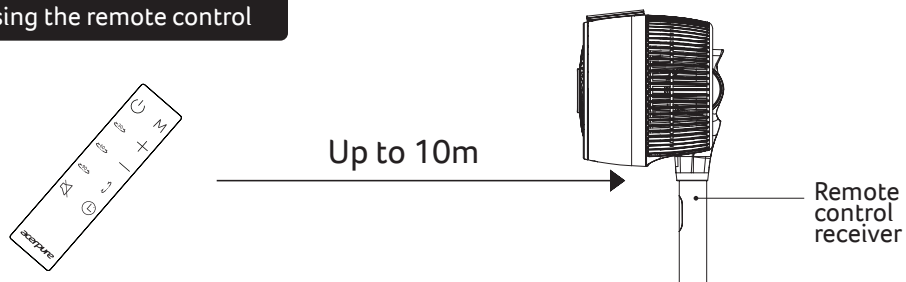
## Replacement & Storage of the remote control.

-  1. Press place ① while holding place ② to pull out the battery buckle.
-  2. Please replace the battery with new one (CR2032), keep the positive side facing upwards, and push the buckle in to complete the replacement of the battery. (CR2032 button-type lithium battery is applicable)
-  3. Place the remote control by the magnet on the head for storing when not in use.

## Precautions for battery usage

- When pulling out the battery shackle, please pull it out slowly and do not tug on it forcefully to prevent the battery from falling out of the shackle.
- The batteries might be hazardous. Please keep batteries away from children.
- If fluids leaked from the battery accidentally splashed into the eyes, do not rub the eyes; rinse the eyes thoroughly with clean water, such as tap water, then seek medical attention immediately. Please note that this may cause blindness.
- If fluids leaked from the battery accidentally got on the skin and clothes, please wash it off immediately with clean water, such as tap water. Please note that this may also cause dyeing.
- If you need to dispose of the battery, please follow the local waste sorting requirements (and use clear tape to wrap both the “+” and “-” sides)

## Using the remote control

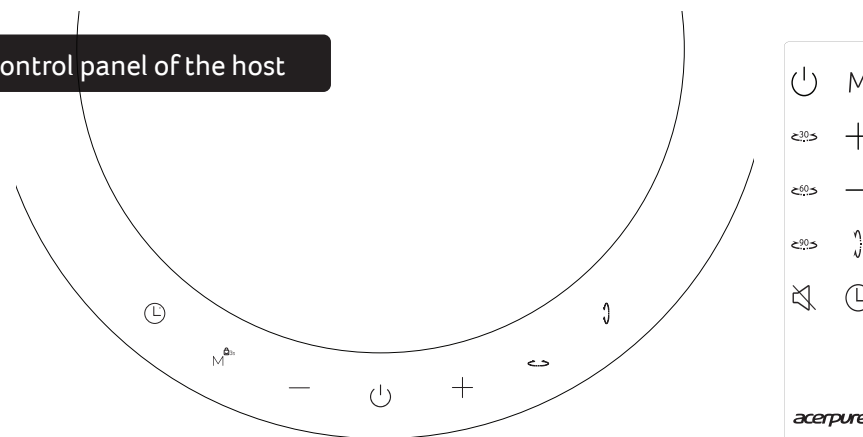



## Remote control precautions


- The remote control must point directly to the signal receiver.
- The usage range of the remote control is approximately within 10m to the front of the receiver; if the remote control is not faced towards the receiver, its usage range will be reduced.
- Do not place any obstacles between the receiver and the remote control.
- Please keep the remote control properly; avoid impacts and dropping. Please remove the battery when not using the remote control, and keep it in a safe place.


# Introduction to Control & Display Panels





## Control panel of the host




 **Power ON/OFF**  
Press to start or stop using this product.

 **Speed Adjustment Button-increase**  
Use this button to adjust the wind speed; One press for one level speed up (the adjustment range is from level 1-16.)  
\*When the speed is at the max level 16, one more press will go back to the min level 1 speed.

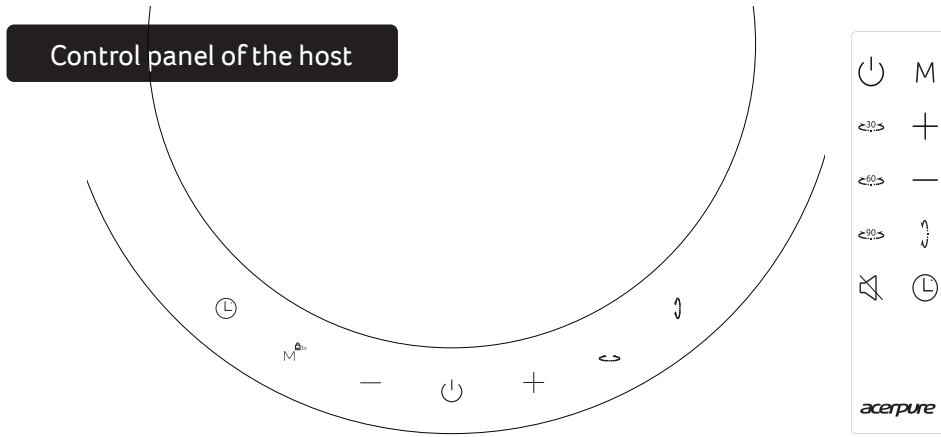
 **Speed Adjustment Button-decrease**  
Use this button to adjust the wind speed; One press for one level speed down (the adjustment range is from level 1-16.)  
\*When the speed is at the min level 1, one more press will go back to the max level 16 speed.

 **Mode Switch Button**  
 One press for ECO mode: the machine will adjust the wind speed based on the environment temperature.  
 Twice press for Sleep Mode: the machine will enter sleep scenario.  
 Three times press for Turbo Mode: the machine will enter Turbo mode, adjusting the wind speed to the maximum level with one press.

 **Child Lock Mode**

- Press mode switch button for 3 seconds, the machine will activate the child lock. Once users touch the control panel & remote, “SAFE” will be showed on the screen to indicate child lock status. To unlock the mode, please press for 3 secs again.
- The power button can still be operated under child lock status, so users can still turn off the machine under child lock mode.
- Under this mode, users need to long press Mode switch button for 3 secs to unlock the machine before turning on the power.
- Childlock can only be turned on/off on the control panel, not on remote control.

# Introduction to Control & Display Panels



**Timer**  
Use this button to preset automatic power off time; the order of the settings is: 1H>2H>4H>8H >Off.  
\* The timer status will be displayed on the display screen, for more details please refer to display screen introduction on the following page.

**Silent Button**  
Use this button to turn on/off the button sounds; pressing this button under silent mode will turn on the sounds.

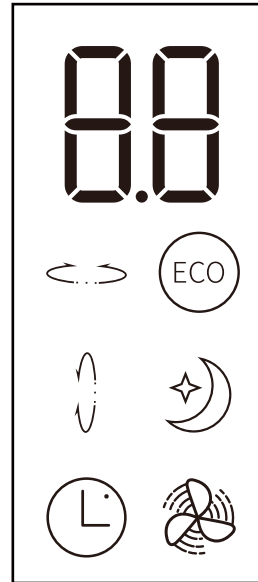
**Left & Right Swing Button**  
Use this button to turn on /off left & right swing; three stages of swing angles are provided for setting, which are in the order of: 30° > 60° > 90° > Close  
\* On remote, users can turn on & off directly with 30° / 60° / 90° button ; please refer to the remote control diagram above.

**Up & Down Swing Button**  
You can use this button to turn on and off up& down swing mode.

**!** The swing is set to automatic functions. Please do not adjust the swing angle manually even the power is off to avoid any damage to the motor.

# Introduction to Control & Display Panels

Display Screen



**ECO mode light**  
When this light is on, the machine has entered ECO mode; the wind speed will be adjusted automatically according to the environment temperature.

**Sleep Mode light**  
When this light is on, the machine will enter sleep mode, and the buttons will be silenced.

**Turbo Mode light**  
When this light is on, the machine has entered Turbo mode; it is the maximum wind speed level of the machine.

**Number keys**  
**Wind speed display:** Under normal operation, the number keys will display the level of the speed from level 1-level 16.

**Left & Right swing display:** When users press left & right swing button, 30° / 60° / 90° will flash on the screen; after flashing for two secs, the setting is completed, it will flash on the screen.

**Timer :** While setting the timer, the hours 1/2/4/8 will flash; after flashing for two seconds, the setting is completed, it will resume showing the speed level.

**Child lock:** Under child lock status, the number keys will flash SA&FE each for two seconds once users touch control panel & remote.

**Left & right swing light**  
When left and right swing is on, this light will be always on constantly; this light will go off when the button is off.  
\* When setting left and right swing, the 30°/60°/90° angles will be displayed on the number keys; the angles will no longer be displayed on screen when setting is complete.

**Up & down swing light**  
When up & down swing is on, this light will be always on; this light will go off when up and down swing is off.

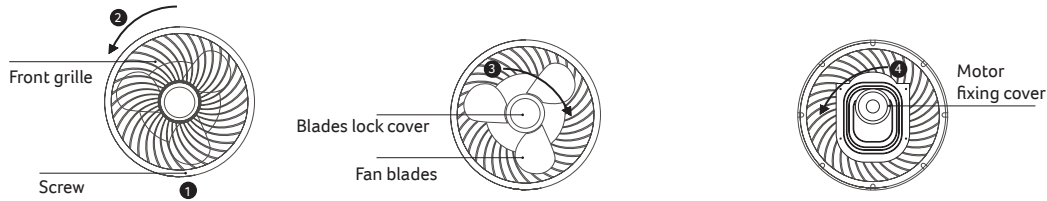
**Timer light**  
When you have successfully preset the timer, this light will be always on ; when the timer function is off, this light will also go off.  
\* Under timer setting mode, 1H/2H/4H/8H will be displayed on the number keys; after setting is complete, it will resume showing the speed level. To check the remaining timer off time, press the timer button again, remaining time will be showd on number keys.



# Maintenance and Disassembly

## Disassembling the fan.

Before disassembling the front grille, make sure that the power of this product has been disconnected.



1. Please unscrew the front grille.
2. After unscrewing the front grille, rotate it counter-clockwise to disassemble it from the grille holder.
3. After disassembling the front grilles, please rotate the blades lock cover clockwise to remove the lock cover, and the fan blade can be disassembled successfully.
4. After disassembling the fan blades, remove the motor fixing cover in a counter-clockwise direction; the rear fan grille can be disassembled after removing the motor fixing cover.

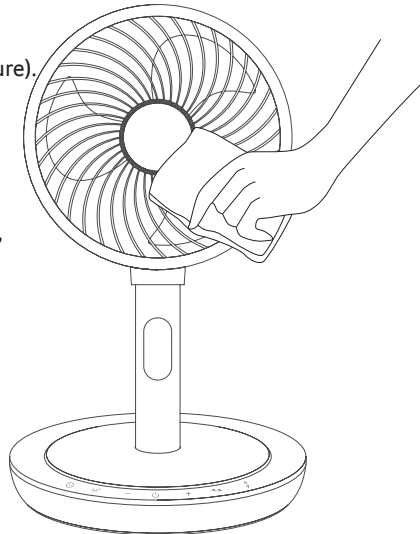
## Maintenance

This product only requires general external cleaning and maintenance (as shown in the figure).

- Do not wipe with thinner, toluene, acidic cleansers, lamp oil, alcohol, or chemical cloth in order to avoid discoloration or deterioration.  
Wipe with a neutral kitchen detergent first, and the wipe with a clean and soft cloth.

- Please note: After maintenance and cleaning, wait for the product to fully dry before connecting power to use again or storing. If the product needs to be stored, please place the product back into the packaging box in the original packaging order, and place it at a dry location for safekeeping.

- Please note: Please always keep any connecting parts & motors dry and dustless to prevent machine from being damaged from moisture & water.



Wipe with a neutral kitchen detergent first, and the wipe with a clean and soft cloth.

# Before Seeking After-sales Service

If you discovered that the product malfunctioned, please check the following items before contacting customer service. Please contact customer service if the abnormal problems still could not be solved with the methods above.

Problem	Possible cause	Solution
Product does not turn on	Is the correct voltage used? Is power connected to the product properly?	Please insert the power plug into the outlet properly, and use the correct voltage
Fan blades did not rotate after the product was turned on	Are there foreign objects stuck in the air circulator?	Please clean the foreign object from the front guard of the air circulator.
When the noise is too loud	Is there excessive dust accumulated in the air circulator?	Please clean the front guard of the air circulator properly.
	Are there foreign objects stuck in the air circulator?	Please clean the foreign object from the front guard of the air circulator.
	Is the product placed on an uneven floor or table top?	Place move the product to a flat floor or table top.
When the remote control cannot be operated	Is the motor shaft of the air circulator fan blades installed properly?	Please install the motor shaft of the air circulator fan blades properly.
	Is the battery dead?	Please replace the battery (Applicable model for the remote control: CR2032).
	Was the remote control pointed towards the front of the product when used?	Please change the usage angle and point the signal receiver of the remote control to the product when in use.

## Product specifications

---

Air circulator fan specifications	
Product name	Air Circulator Fan
Product model	AF773-20W / AF773-20P / AF773-20Y
Rated voltage	220-240V~50/60 Hz
Rated power	33W
Net weight	4.68 kg
Product dimensions	320X320X860mm
Place of origin	China

## Company information

---

***acerpure***

[www.acerpure.com](http://www.acerpure.com)

Memo

---



Memo

---